

eastern
elegance

1 & 2 BHK Homes, Manjri

DESIGNER MADE HOMES
FOR THE SELF-MADE.

IT'S A NEW DAY; A NEW WAY.

We proudly present a new corporate identity

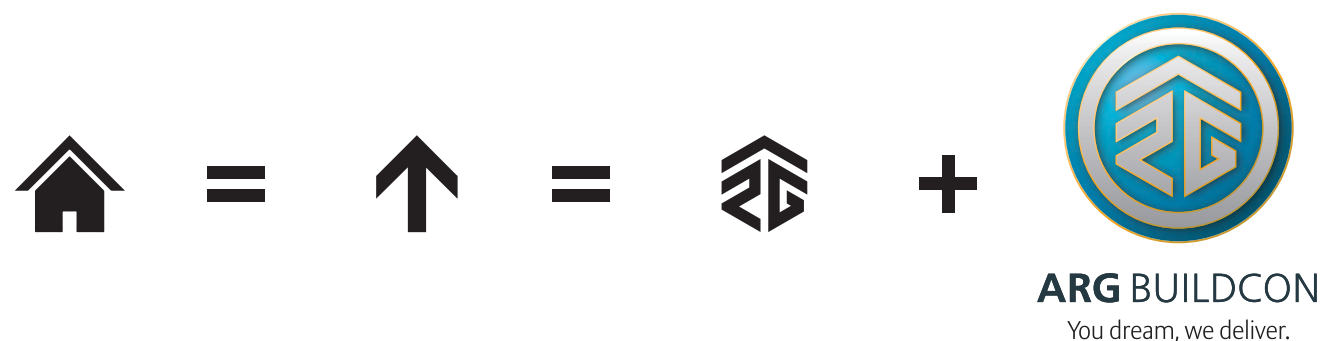
ARG BUILDCON AND ASSOCIATES LLP.

A brand new player on the realty landscape built on the pillars of dynamism, integrity and commitment.

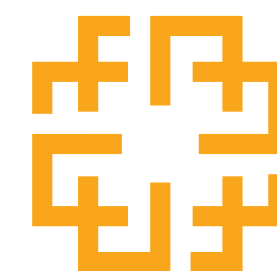
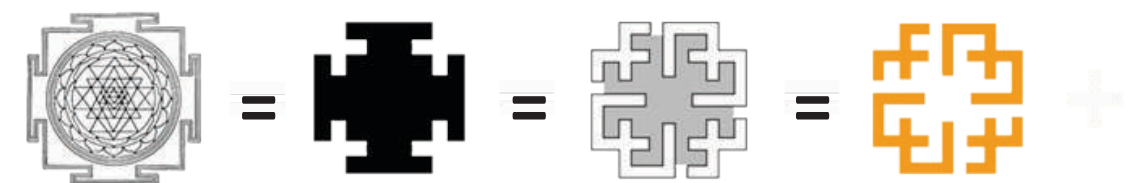
Our logo is created out of these values. Depicting a roof to convey our arena of activity (housing), the monogram is also symbolic of an upward arrow, conveying our vision and progressiveness. All the elements are encased in a circular emblem like a seal or stamp which represents the assurance and reliability of the brand.

COME DISCOVER NEW LIFESTYLES WITH ARG.

www.argbuildcon.com



The logo is a stylized graphic derived from the Shree Yantra of Vaastu Shastra; the most auspicious and powerful yantras for attaining worldly desires and fulfilling wishes through inner and cosmic strength. It also emphasizes our belief in the power of Vaastu to ensure long-term stability, bliss and prosperity in the constructed home.



**eastern
elegance**

1 & 2 BHK Homes, Manjri



eastern
elegance

1 & 2 BHK Homes, Manjri

DREAMS DELIVERED!

Welcome to ARG Buildcon's maiden offering: Eastern Elegance. Conceptualised as a residential project that uplifts lifestyles and delivers happiness, Eastern Elegance embodies **"DREAMS DELIVERED"**



Artist's Impression



AMENITY
SPACE

ENTRANCE
GATE

PROPOSED
COMMERCIAL
SPACE

ENTRANCE
GATE

PARTY LAWN

CLUB
HOUSE

CHILDREN PLAY
AREA



Artist's Impression

SPECIFICATIONS

Structure

Earthquake resistant R.C.C. frame structure with best material components

Bathrooms & Toilets

Coloured glazed tiles dado up to 7" height in toilet

Concealed plumbing with jaguar or equivalent brand sanitary fixtures and fittings

Provision for geyser & exhaust fan point in each toilet

Masonry Work

AAC block for external wall

Gypsum finish for internal wall and sand faced external plaster

Flooring

Good quality vitrified tiles in hall, kitchen & all bedrooms

Kitchen

Granite kitchen platform with stainless steel sink

Provision for exhaust fan

Electric points for refrigerator, oven, exhaust fan & water purifier

Washing machine point (inlet & outlet)

Windows

3 track powder coated aluminum windows with mosquito net

Electrical

Sufficient points with concealed copper wiring along with modular switches

Switches of standard make

Domestic point for refrigerator, washing machine, hot water geyser and water purifier

Doors

All doors wooden frame with wooden flush doors & marble frame for toilets

Cylindrical locks for bedroom doors

Painting

Internal walls in OBD paint

External walls in branded Apex paint / Acrylic / Tex paint



Created for your good health



Sit-outs for senior citizens



Children's play area with equipment



Gymnasium

Maximizing your convenience



Solar water heater



Generator / Power back up for common areas & lifts



Rainwater harvesting system



Top priority for your security



Firefighting system



24-hour security



CCTV for entrance gate



Security cabin



Ensuring your entertainment



Club House with indoor games (Chess, Carom, etc.)



Amphitheater



Party lawn



Gazebos

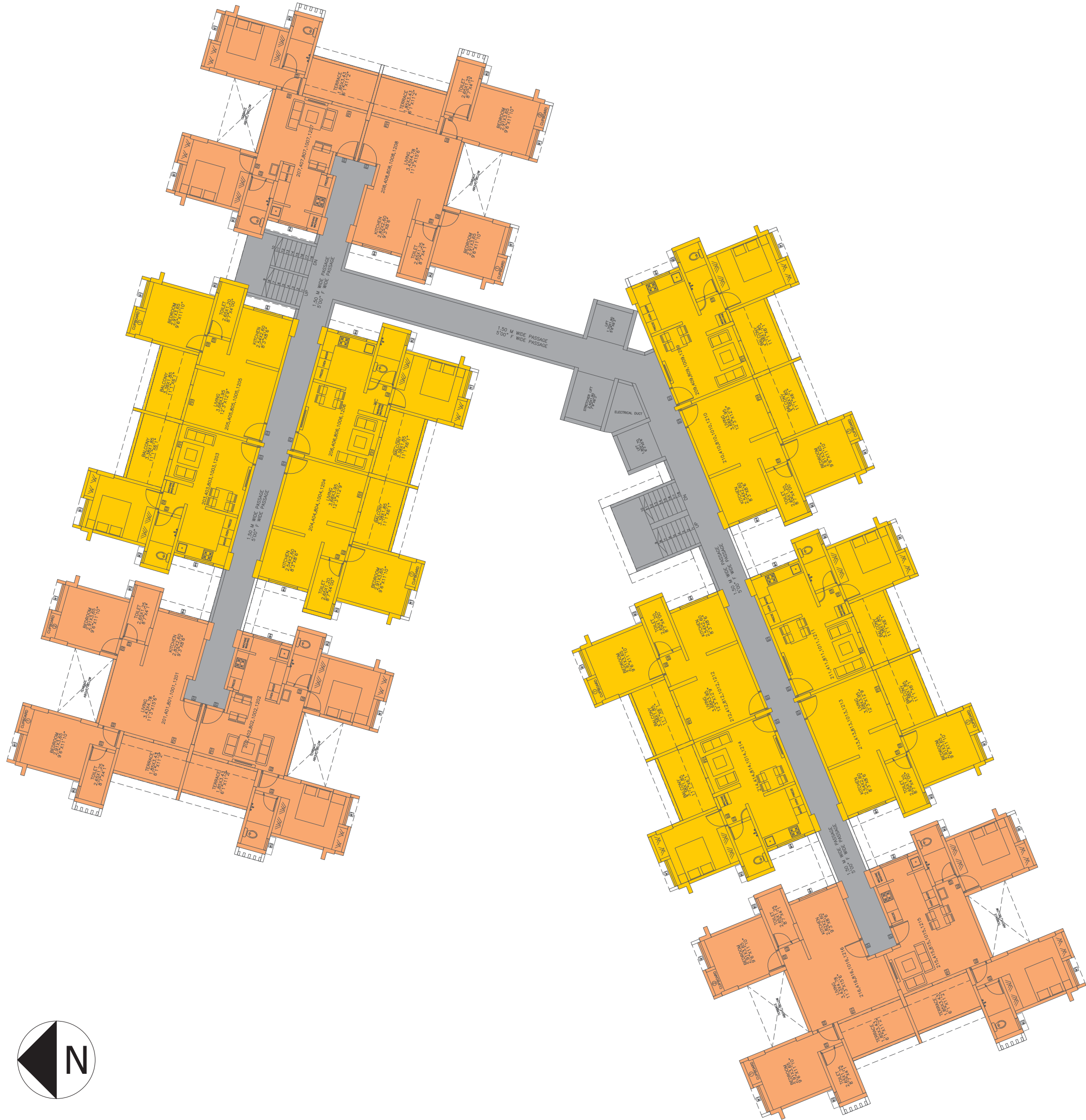


Artist's Impression



FIRST FLOOR PLAN

SCHEDULED OF CARPET AREA 1ST FLOOR										
FLAT NO.	FLAT TYPE	CARPET	TERRACE	BALCONY	CUPBOARD1	CUPBOARD2	GARDEN 1	GARDEN 2	Carpet Area sq.m.	Carpet Area sq.ft.
101	2 BHK	53.42	6.16	0	0.62	0.62	16.32	4.49	81.63	878.67
102	2 BHK	53.42	6.16	0	0.62	0.62	18.22	4.49	83.53	899.12
103 104 105 106 109 110 111 112 113 114	1 BHK	36.51	0	6.23	0.62	0	4.56	0	47.92	515.81
107 108	2 BHK	53.42	6.16	0	0.62	0.62	12.83	4.49	78.14	841.10
115 116	2 BHK	53.82	6.16	0	0.62	0.62	12.83	4.49	78.54	845.40



SECOND FLOOR PLAN

SCHEDULED OF CARPET AREA 2ND, 4TH, 8TH, 10TH & 12 TH FLOOR								
	Flat Type	Carpet	Terrace	Balcony	Cupboard 1	Cupboard 2	Carpet Area sq.m.	Carpet Area sq.f.
201,401,801,1001,1201 202,402,802,1002,1202 207,407,807,1007,1207 208,408,808,1008,1208	2 BHK	51.5	6.32	0	0.62	0.62	59.06	635.72
203,403,803,1003,1203 204,404,804,1004,1204 205,405,805,1005,1205 206,406,806,1006,1206 209,409,809,1009,1209 210,410,810,1010,1210 211,411,811,1011,1211 212,412,812,1012,1212 213,413,813,1013,1213 214,414,814,1014,1214	1 BHK	36.28	0	6.23	0.62	0	42.42	456.61
215,415,815,1015,1215 216,416,816,1016,1216	2 BHK	51.89	6.32	0	0.62	0.62	59.45	639.92



ODD FLOOR PLAN

SCHEDULED OF CARPET AREA 3RD, 5TH, 7TH & 9TH FLOOR PLAN								
FLAT	Flat Type	Carpet	Terrace	Balcony	Cupboard 1	Cupboard 2	Carpet Area sq.m.	Carpet Area sq.f.
301, 501, 701, 901 302, 502, 702, 902 307, 507, 707, 907 308, 508, 708, 908	2 BHK	51.83	6.16	0	0.62	0.62	59.23	637.55
303, 503, 703, 903 304, 504, 704, 904 305, 505, 705, 905 306, 506, 706, 906 309, 509, 709, 909 310, 510, 710, 910 311, 511, 711, 91 312, 512, 712, 912 313, 513, 713, 913 314, 514, 714, 914	1 BHK	36.28	0	6.23	0.62	0	42.42	456.61
315, 515, 715, 915 316, 516, 716, 916	2 BHK	52.22	6.16	0	0.62	0.62	59.62	641.75



MAHA RERA
REGISTRATION NO:
P52100013948
maharera.mahaonline.gov.in

KEY DISTANCES

A.M. College	300 mtrs
Serium Institute	900 mtrs
Kumar Medows	1.6 km
Manjari Railway Station	1.8 km
Hadapsar	2.5 km
SP infocity	3 km
Noble Hospital	4 km
Amanora Mall	4 km
Magarpatta City	5.4 km
DSK Infocon University	6 km
Camp	8 km
MIT Gurukul	9 km
Koregaon Park	10 km
Eon IT Park	10 km
Pune Station	10.5 km
Airport	15 km



ARG BUILDCON

You dream, we deliver.

EASTERN ELEGANCE

Survey No.93, Near Serum Institute, Adjacent to Poona Radiators Company, Mahadevnagar, Manjri Budruk, Pune 412307

98222 06600 | ARG Buildcon And Associates LLP | www.argbuildcon.com | sales@easternelegance.in

Disclaimer: This brochure is purely conceptual and is designed in good faith to give a fair and overall view of the project. It is not a legal offering nor will it be part of any agreement. Nothing in this brochure will take precedence in the final agreement. The Developer reserves rights to make additions, deletions, alterations or amendments as and when it deems fit and proper, without any prior notice. The use of clubhouse shall be strictly in accordance with rules & regulations. 'Future development' may consist of high-rise buildings.